

 **EILUX**



:00 14:30 15:00 15:30 16:00 16:30 17:00 17:30 18:00 18:30 19:00 19:30 20:00 20:30 21:00 21:30 22:00 22:30 23

fine watch winding systems



This machine is specially designed for mechanical watches that are equipped with auto-winding or AGS system. In order to operate your automatic watch winder efficiently and ensure its maximum life, please read this manual thoroughly. We hope that you will enjoy the superior quality of this machine.



### Important Safeguards

- Use only with appropriate voltage and the adaptor provided with this system to avoid malfunction or damage to the winder.
- Do not remove screws or covers from the power adaptor and the winder unit, there are no user serviceable parts inside.
- Do not expose the system to rain or moisture.
- Disconnect the adaptor from wall outlet to shut the power off completely; the power switch on the winder unit does not disconnect the mains line.

### World-Wide Guarantee

- This winder is guaranteed for twelve (12) months from the date of purchase.
- The guarantee only covers malfunctioning and manufacturing defects that are recognized by the factory. It becomes void if the winder has been improperly used or if improper maintenance or repairs have been attempted. It does not cover excessive wear and tear or visual defects caused by user.
- The guarantee is void once the case cover has been opened.
- Battery replacement is at customer's own expense.
- The guarantee is only valid when presented with the original purchase invoice with the date of purchase clearly printed on it.
- Contact **EILUX** service center for return authorization before sending winder for warranty, or post warranty service. Shipping is at customer's own expense.
- There are no expressed warranties except as listed above.



## Why you need an EILUX winder?

Wristwatches with mechanical movements rely on spring wound engines to operate. Traditionally, such watches are hand wound daily via a winding crown to ensure proper operation. An advanced version of the mechanical wristwatch contains an "Automatic" or self-winding" movement that employs a built-in rotor mechanism to wind the coiled mainspring. This winding motion generates from random wrist movements of the wearer as he or she engages in normal day-to-day activities while wearing the watch. Generally, the winding rotor mechanism swings through an arc of 30 to 60 degrees as the wearer works or walks or swings his or her arm. As long as the watch is being worn, it runs continuously and accurately. The watch's mainspring stores the required energy to power the watch and maintain its precision via the balance wheel oscillations. This means that a mechanical watch that is wound daily maintains its optimum operational and time-keeping qualities.

Many automatic watches not only display the time but also provide additional features or "complications" such as day and date or, in more sophisticated automatic timepieces, displays of month year, leaf-year, moon phase, tide durations elapsed time, world time zones, etc. With each additional complication, takes up more of a movement's power reserve between windings. Such watches, when unworn and with its mainspring unwound, must be reset in order to be functional again. The task of resetting the time, date and day, and other complications can be an annoying task. As the number of complications increases, the time and effort not only increases but risks damage to the movement as many complications have to be reset with the movement set under a particular setting, such as the hands being around the 3 to 9 o'clock areas.

Often, aficionados of automatic timepieces have more than one wristwatch in their collection. These watches all serve a purpose to their wearers either for function or aesthetics. One may have a stainless steel watch which serves well under sporting conditions such as scuba diving or yachting or for wearing to sport events. Or one may have platinum or gold dress watches for business activities or formal social functions. With many watches in one's possession, the task of keeping these timepieces wound daily can be tedious, thus many multiple watch owners employ one or more watch winder to accomplish the task of keeping their automatics constantly operational.

A watch winder is a powered unit that functions to keep an automatic watch fully wound, thereby eliminating the need for manual rewinding and resetting. When mounted on the winder, the watch rotates clockwise, counterclockwise, or in both directions with the rotation axis being the centerline of the watch. Therefore, the watch rotates in the same plane as the hands of the watch. A watch winder does the job for owners of multiple watches who want to maintain their automatics and complications in ready-to wear condition.

All **EILUX** Watch Winders employ a solid-state microprocessor that is programmed to control a D/C motor that intermittently drives a rotating compartment. This rotating unit carries the spring-loaded watch holder, which rotates inside the compartment to give maximum protection for all your fine automatic watches.

### Winding Program Selection

In recognition of the growing use of watch winders to maintain automatic timepieces, some watch manufacturers are beginning to publish data on the winding requirements of their watches as a convenience to their customers. About eighty-five percent (85%) of all fine automatic watches wind bi-directional and generally require between 650 and 850 Turns Per Day (TPD) whether worn on your wrist or while running on your watch winder. With this in mind, **EILUX** Watch Winders are preset at the factory for around 1000 TPD on 2-hour cycle mode and provide automatic reversing. That is the best mode for most automatic watches. Bi-directional winding distributes wear over all components of the watch's internal winding mechanism and is the most efficient mode of winding operation. Of the remaining fifteen percent of watches that wind clockwise, and the remaining five percent of watches that wind counter clockwise only.

### Power Reserve Indication

Some automatic watches utilize a Power Reserve Indicator (PRI) on the dial face. The PRI indicates how many hours the watch will operate if left unworn. Basically, the PRI indicates the tension of the mainspring. **EILUX** Watch Winders are designed to keep your watch running continuously. PRI will indicate anywhere from 1/4 to full and when used in conjunction with watches with a reserve on the PRI scale. This is perfectly normal to prevent winding your watch more than necessary.

## Eilux Silver-Ion Antibacterial Watch Mount

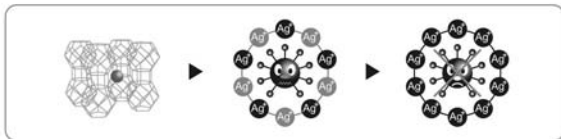
The new **EILUX** Silver-ion antibacterial watch mount developed by latest FDA and EPA approved technology from England. AMC/Sil silver ion is a new generation of antibacterial technology which kills up to almost 99% of bacteria, fungi and algae on the surface of the watch mount. As long as the watch touches the watch mount, the watch will not be contaminated with bacteria.

### How Silver-Ion Watch Mount Benefits Your Precious Watches

The Silver-ion Watch Mount can avoid the continuous growth of bacteria on your watches and watch bands after wearing. Continuous growth of bacteria on your watches can cause skin rashes and irritation for the watch users. It can also distort the shine of the surface finishing of the watch and damage most of leather & fabric strap. Bacteria also damage the water proof gasket inside the watch crown & watch case back cover and may cause leakage problems in your watches.

### How Silver-Ion ( $\text{Ag}^+$ ) Works

- AMC/Sil is non-toxic silver based compound which active species is silver-ion(  $\text{Ag}^+$  ).The specific structure of AMC/Sil controls slow release of silver ions.
- Silver-ion is taken up by the cell membrane and inside the cell.
- Silver-ion is binding to DNA interferes with DNA replication.
- Silver-ion also binds and denaturized of bacterial respiratory enzyme system to disrupt the bacterial cell.



#### DISCLAIMER:

This information is to the best of own knowledge and given based on data from supplier's performance tests and examined by Ciba Laboratory (UK) Ltd.

## Unique features of EILUX winders

All **EILUX** watch winders have several unique features that protect and maintain the value of your watches:

- **Super-quiet operation** - Absolutely bedrooms accessible!
- **User-friendly design** - Equipped with our smart integrated circuit for winding control system allows you to set the best winding mode individually for each of your valuable watches. Natural and smooth winding motions programmed to imitate the real human body movements as wearing the watch in your wrist.
- **Auto-stop Function** - the most advanced technology in watch winder control system. With this user-friendly function, the winder will cease its operation automatically when opened in order to protect your valuable watch and the winder itself.
- **"Super-metal conductor"** motor is being employed for **EILUX** winder - Super-metal conductor is the most advanced technology in motor manufacturing that provides the best winding performances and durable services for the winder.
- **Safety** - Our "insert-type" watch mounting system ensures the adequate - mounted watch will never detach your valuable watch from the winder during its operation.
- **Universal spring-loaded watch holder** - it provides adjustment-free to mount all size of your timepieces.
- **Contemporary and stylish design** - it is a precision winding piece as well as a unique design for home and/or office decorations.
- **Double-Injection Technology** - the soft-surface spring-loaded watch holder with rubber skin is produced by "Double-Injection Technology" that ensures the best protection for your valuable watches.

- **Professional grade construction** - Solid & precision construction provide high performances of shock-resistance, stable winding motions and long-lasting services. This laser calibrated rotor alignments provide you with the best winding angles for your watch.
- **Extremely Long battery service life** - Special design "Power Conserved Circuits" extend battery life by three times compared to conventional designs. Two batteries will last the winder for approximately 12 months.
- **Compact size** - allows you to keep your watch winder inside a regular-sized safe deposit box without problem on size & power supply.
- **"Metal-to-metal contact-free" design** - Maximize protection for your watches.
- **Smart pilot light indication** - always indicate the operation status with this special design pilot beam-light. Super narrow beam light is designed to avoid the disturbances in your bedroom and/or den.
- **Silver-ion anti-bacterial technology** - world's first anti-bacterial watch mounting system prevents build-up of harmful moisture and mould in watch's inner workings and straps - also helps to maintain color and shine on fine surface.





## OPERATING INSTRUCTIONS



**RoHS**  
COMPLIANCE

**PATENTED**

**REGISTERED DESIGN**

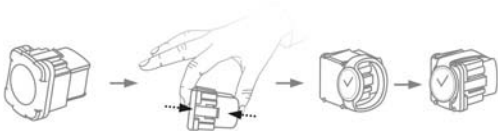


## Begin Operation

1. Make sure the proper winding direction is selected.
2. Switch on the power and place the winder on a flat and level surface.
3. For safety and internal check-up, the winder will delay to operate 2 seconds after the switch is turned on.
4. The control logic will reset automatically whenever the switch is turned on.

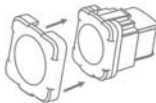
## To Hold Your Watch

1. Buckle up your watch completely.
2. Place the watch onto the universal watch-holder.
3. The watch holder is self adjustable to hold different sizes of watches.
4. Insert the watch into the winding compartment firmly.



### For BIG size watch mounting:

5. Attach the male-size adaptor onto the top of the universal watch holder.
6. Repeat watch mounting procedures 1-4.



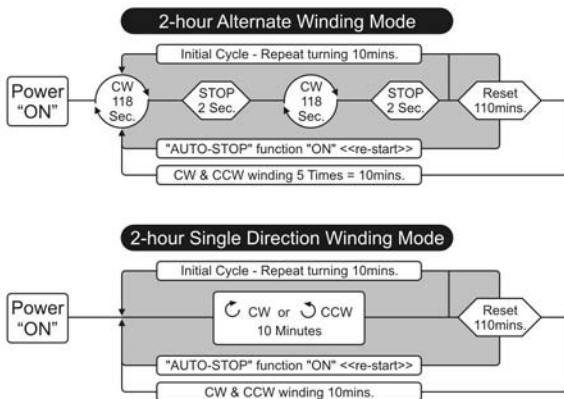
### IMPORTANT:

Watch must be tightly mounted on the universal watch-holder to avoid risk of scratch and noise while the winder running.

## The Fuzzy-logic Operation Program

This winder is preset for automatic alternate winding mode.

- Once the power is on, the winding compartment will start rotating clock-wise automatically.
- The winder will repeat the alternate winding for 10 minutes and then go to the sleep mode.
- After 1 hour and 50 minutes (2-hour mode), the winder will resume to work and repeat the winding again.
- Whenever the winder is preset, it will run two 10-minute intervals and then 10 minutes every 2 hours.



### IMPORTANT:

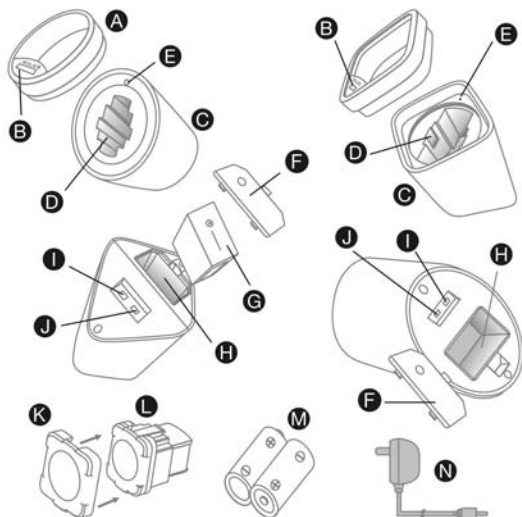
Please check with your watch manual or consult a watch professional to confirm the most suitable winding direction.

You may also check your watches' winding direction from [www.EILUX.com](http://www.EILUX.com) in the chapter of: "Technical Info" and "Select winding direction".

## Components

**Model: EW-1360, EW-1388, EW-1388B, EW-1466 & EW-1466B**

- |  |                                       |
|--|---------------------------------------|
| <b>A</b> Dust cover                              | <b>H</b> Battery compartment          |
| <b>B</b> LCD Clock*                              | <b>I</b> Power switch                 |
| <b>C</b> Machine body                            | <b>J</b> Direction select switch      |
| <b>D</b> Rotating Compartment                    | <b>K</b> Male size watch adapter      |
| <b>E</b> Pilot light                             | <b>L</b> Universal watch holder       |
| <b>F</b> Battery cover                           | <b>M</b> UM-2 / Size "C" batteries*   |
| <b>G</b> Electric-noise filter & D.C. connector* | <b>N</b> D.C. adaptor*<br>(*Optional) |



## To Set The Digital Clock

### Model: EW-1388B & EW-1466B only

Function display: MONTH, DAY, HOUR, MINUTE and SECOND.

Battery installed: One piece of SR-41, AG-3 or LR-41

1. Press MODE button for display function select and press SET button for setting.
2. Time and Date display: Press the MODE button once to alternating display Time and Date.
3. MONTH: Press the MODE button twice to display Month, then depress to set.
4. DATE: Press the MODE button 3 times to display Date, then release to set.
5. HOUR: Press the MODE button 4 times to display Hour, then release SET to (A' for AM or 'P' for PM).
6. MINUTE: Press the MODE button 5 times to Minute then release SET to set.
7. Press the MODE button for the last time to return to normal display and press A to start the time from 00 second.



EW-1388B

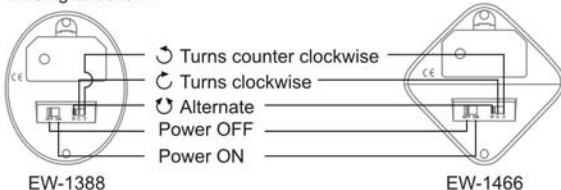


EW-1466B

## Winding Direction Selection

Please check with your watch manual or consult a watch professional to confirm the most suitable turning direction. Over 85% of fine watches require alternate winding and generally require a minimum of 650~850 Turns Per Day (TPD). Therefore, this winder is pre-set at automatic alternate winding mode in approximately 1000TPD to ensure sufficient winding. The winder will wind for 10 minutes every 2 hours.

You may also check your watches' winding direction at [www.EILUX.com](http://www.EILUX.com) in the chapter of: "Technical Info" and "Select winding direction".



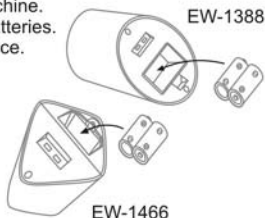
## Battery Operation

1. Remove battery cover from machine.
2. Insert two (2) UM2 / Size "C" batteries.
3. Replace the battery cover in place.



### IMPORTANT:

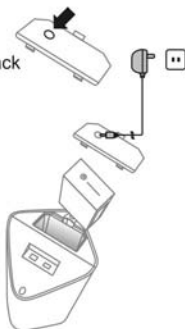
Please be sure to insert batteries in correct direction.



## Eilux D.C. Power System (Optional)

DC power supply system is available optionally. Following the procedures below to connect your winder safety with original adaptor provided.

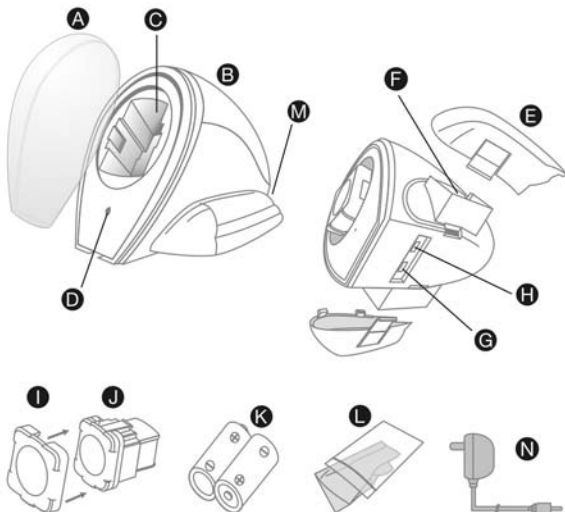
1. Remove batteries from the winder unit.
2. Release the fixing handle on the topside of power filter.
3. Insert the power filter unit inside the battery compartment.
4. Make sure the D.C. jack hole on the power filter unit matches the D.C. jack hole on the compartment cover.
5. Depress the fixing handle to lock the power filter unit inside the battery compartment.
6. Puncture D.C. jack hole on the battery cover and place the cover in place.
7. Firmly insert the D.C. plug into the D.C. jack on the compartment cover.
8. Plug the supplied power adaptor to the electrical outlet.
9. Only use the adaptor provided with this system to avoid malfunction or damage of the system.
10. Now you can operate the winder unit with the wall electrical supply.



## Components

### Model: EW-1901

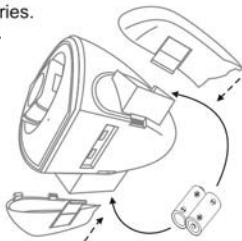
- |                               |                                     |
|-------------------------------|-------------------------------------|
| <b>A</b> Dust cover           | <b>H</b> Direction select switch    |
| <b>B</b> Machine body         | <b>I</b> Male size watch adapter    |
| <b>C</b> Rotating Compartment | <b>J</b> universal watch holder     |
| <b>D</b> Pilot light          | <b>K</b> UM-2 / Size "C" batteries* |
| <b>E</b> Battery cover        | <b>L</b> Watch cleaning cloth       |
| <b>F</b> Battery compartment  | <b>M</b> D.C. jack                  |
| <b>G</b> Power switch         | <b>N</b> D.C. adaptor*              |
- (\*Optional)



## Battery Operation

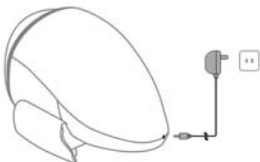
1. Remove battery cover from machine.
2. Insert two (2) UM2 / Size "C" batteries.
3. Replace the battery cover in place.

**IMPORTANT:**  
Please be sure to insert batteries in correct direction.



## A/C Power Operation

1. Firmly insert the power plug from the adaptor into the DC jack.
2. Plug the supplied power adaptor into the electrical outlet.
3. Power supplied from batteries will automatically be cut and convert to power from DC adaptor when the DC adaptor is plugged in.
4. Only use the adaptor with this system to avoid risk of malfunction or damage of the winder.



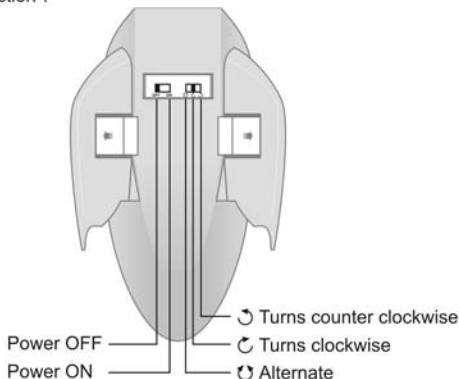
### **WARNING:**

Improper DC adaptor may damage the integrated circuit and cause of fire.

## Winding Direction Selection

Please check with your watch manual or consult a watch professional to confirm the most suitable turning direction. Over 85% of fine watches require alternate winding and generally require a minimum 650~850 Turns Per Day (TPD). Therefore, **EILUX** winders are pre-set at alternate winding in approximately 1000 TPD to insure sufficient winding provided. **EILUX** winders will wind for 10 minutes every 2 hours.

You may also check your watches' winding direction from [www.EILUX.com](http://www.EILUX.com) in the chapter of: "Technical Info" and "Select winding direction".



1. Please refer to product drawings for Direction Select Switch located.
2. Set the power switch to the OFF position before changing the direction position.
3. Selection between Alternate Clockwise ~ Counter ~ clockwise for your watch required.



### IMPORTANT:

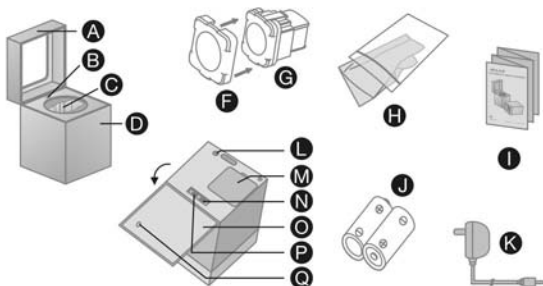
The protective circuit equipped may not accept the direction change if the power switch is not in OFF position before changing the direction setting.



## Components

Model: EW-1700 , EW-1711, EW-3711

- |                                  |                                      |
|----------------------------------|--------------------------------------|
| <b>A</b> Cover                   | <b>J</b> UM-2 batteries (Option)     |
| <b>B</b> Pilot                   | <b>K</b> D.C. power adaptor (Option) |
| <b>C</b> Rotor                   | <b>L</b> D.C. jack                   |
| <b>D</b> Main body               | <b>M</b> Battery compartment cover   |
| <b>E</b> Cover lens              | <b>N</b> Direction select switch     |
| <b>F</b> Gents mounting adaptor  | <b>O</b> Bottom cover                |
| <b>G</b> Universal watch mount   | <b>P</b> Power switch                |
| <b>H</b> Watch cleaning cloth    | <b>Q</b> D.C. jack inlet             |
| <b>I</b> Manual & warrantee card |                                      |



## Battery Operation

1. Open the bottom cover & the battery compartment cover.
2. Insert two UM2 / "C" type alkaline batteries into the battery compartment.
3. Place the battery cover in place.

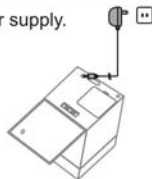


### IMPORTANT:

Please be sure to insert batteries in the correct direction.

## A/C Power Operation

1. Connect the power adaptor to a wall A/C power supply.
2. Insert power plug into jack.
3. Power supply from batteries will automatically be cut and convert to A/C power operation when A/C plug has been inserted.
4. Use only original manufacturer's adaptor.
5. Improper transformer may damage the winder and cause risk of fire.

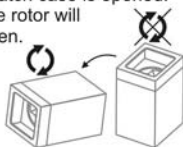


## To Select The Winding Direction

Please check with your watch manual or consult a watch professional to confirm the most suitable turning direction. Over 85% of fine watches are require alternate winding and generally require a minimum of 650~850 Turns Per Day (TPD). Therefore, this winder is pre-set at alternate winding in approximately 1000 TPD to insure sufficient winding provided. The winder will wind 10 minutes every 2 hours. You may also check your watches' winding directions from [www.EILUX.com](http://www.EILUX.com) in the chapter of: "Technical Info" and "Select winding direction".

### A. Auto-Stop function

- An advanced protective mechanism protects the winder's inner workings by ceasing operation when the watch case is opened.
- When switch to "AUTO-STOP" position, the rotor will stop running whenever the box cover is open. The winder will resume to run again once the cover is closed.
- Whenever the winder is restarted, it will run two 10-minute intervals and then 10 minutes every 2 hours.



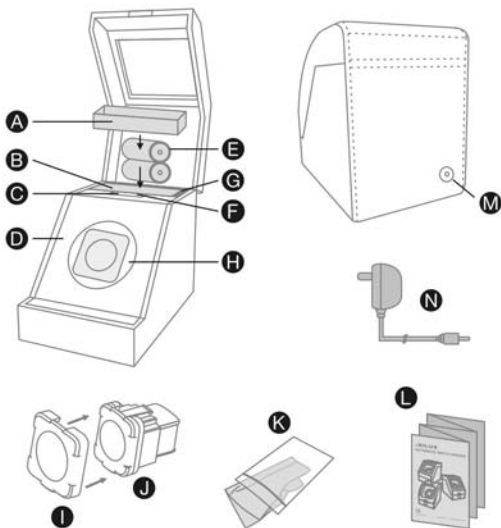
### B. Winding direction select

- Please refer to product drawings for Direction Select Switch located.
- Set the power switch to the OFF position before adjusting the switch.
- Selection between Alternate ~ Clockwise ~ Counter-clockwise for your watch required.

## Components

**Model: EW-1452, EW-1453, EW-1455, EW-3452, EW-3453**

- |                                  |                                  |
|----------------------------------|----------------------------------|
| <b>A</b> Accessory tray          | <b>H</b> Rotor                   |
| <b>B</b> Battery compartment     | <b>I</b> Gents mounting adaptor  |
| <b>C</b> Pilot light             | <b>J</b> Self-adjust watch mount |
| <b>D</b> Front panel             | <b>K</b> Watch cleaning cloth    |
| <b>E</b> UM-2 battery (option)   | <b>L</b> Manual & warrantee card |
| <b>F</b> Power switch            | <b>M</b> D.C. power jack         |
| <b>G</b> Direction select switch | <b>N</b> D.C. adaptor (option)   |



## Battery Operation

- Lift out the accessory tray.
- Remove the battery cover from the winder.
- Insert two (2) UM2 / Size "C" alkaline batteries.
- Replace the battery cover in place.

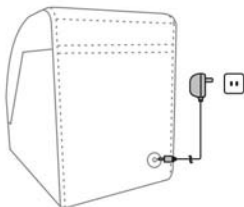


### IMPORTANT:

Please be sure to insert the batteries in the correct direction.

## A/C Power Operation

- Firmly insert the power plug from the adaptor into the DC jack.
- Plug the supplied power adaptor into the electrical outlet.
- Power supplied from batteries will automatically be cut and convert to power from DC adaptor when the DC adaptor has been plugged in.
- Only use the adaptor provided with this system to avoid risk of malfunction or damage of the winder.



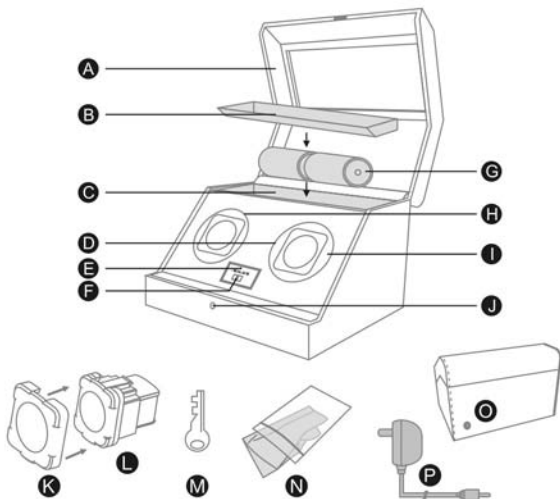
### WARNING:

Improper DC adaptor may damage the integrated circuit and cause of fire.

## Components

**Model: EW-1444, EW-1488, EW-3444, EW-3448**

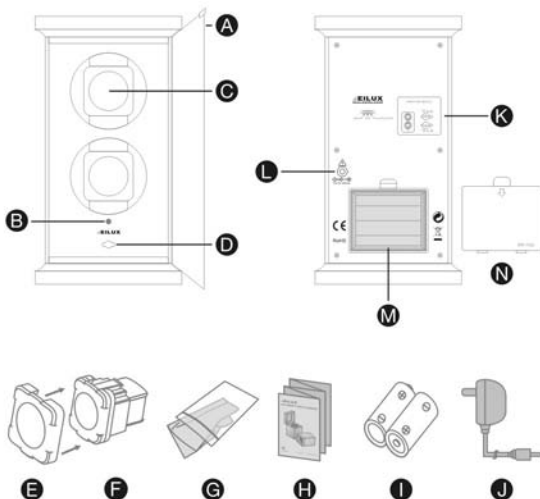
- |                                  |   |
|----------------------------------|---|
| <b>A</b> Front cover             | <b>I</b> Rotor-right                    |
| <b>B</b> Accessory tray          | <b>J</b> Lock (EW-1488, EW-3448 only)   |
| <b>C</b> Direction-select switch | <b>K</b> Gents mounting adaptor         |
| <b>D</b> Front panel             | <b>L</b> Self-adjust spring watch mount |
| <b>E</b> Pilot light             | <b>M</b> Key (EW-1488, EW-3448 only)    |
| <b>F</b> Power switch            | <b>N</b> Watch cleaning cloth           |
| <b>G</b> UM-1 Batteries*         | <b>O</b> D.C. power jack                |
| <b>H</b> Rotor-left              | <b>P</b> D.C. adaptor                   |
- (\*Optional)



## Components

### Model: EW-1122

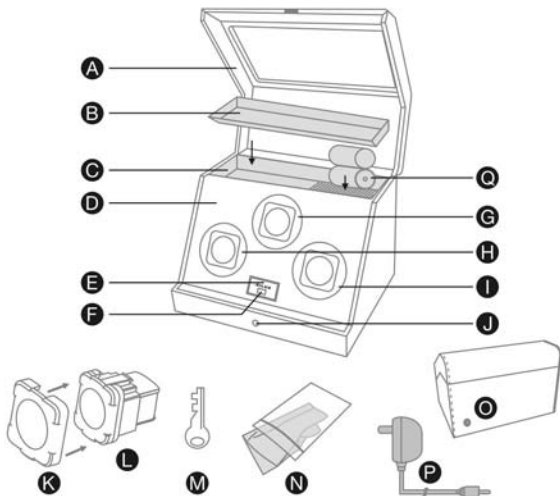
- |                                      |                                      |
|--------------------------------------|--------------------------------------|
| <b>A</b> Cover lens                  | <b>H</b> Manual & Warranty Card      |
| <b>B</b> Pilot                       | <b>I</b> UM-2 batteries x 2 (Option) |
| <b>C</b> Rotor                       | <b>J</b> D.C. power adaptor          |
| <b>D</b> Power switch                | <b>K</b> Direction select switch     |
| <b>E</b> Gents size mounting adaptor | <b>L</b> D.C. jack                   |
| <b>F</b> Universal watch mount       | <b>M</b> Battery compartment         |
| <b>G</b> Watch cleaning cloth        | <b>N</b> Battery compartment cover   |



## Components

**Model: EW-1500, EW-1588, EW-3500, EW-3533**

- |                                  |   |
|----------------------------------|---|
| <b>A</b> Front cover             | <b>J</b> Lock                           |
| <b>B</b> Accessory tray          | <b>K</b> Gents mounting adaptor         |
| <b>C</b> Direction-select switch | <b>L</b> Self-adjust spring watch mount |
| <b>D</b> Front panel             | <b>M</b> Key                            |
| <b>E</b> Pilot light             | <b>N</b> Watch cleaning cloth           |
| <b>F</b> Power switch            | <b>O</b> D.C. power jack                |
| <b>G</b> Rotor-center            | <b>P</b> D.C. adaptor                   |
| <b>H</b> Rotor-left              | <b>Q</b> UM-1 Batteries x 2 (Optional)  |
| <b>I</b> Rotor-right             |   |

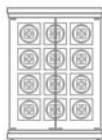


## Cabinet Multi-winder

- Each winding unit operates individual.
- For winder setting, kindly refer to model EW-1700.
- For convenience of traveling or service occasionally, you can push out the individual winder unit from the cabinet.
- Additional watches & jewelries storage compartment is equipped on the top-side of the cabinet.

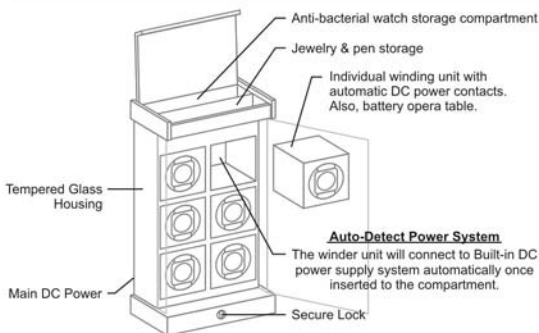


EW-1706  
EW-3706



EW-1712  
EW-3712

## To Power The Cabinet Multi-winder



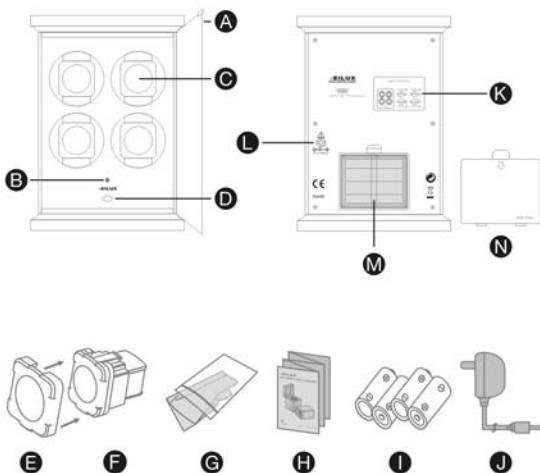
- The winder can be operated by both batteries and DC power.
- Two UM-2 batteries are required for each of winder unit.
- For wall electric power operate, please connect the DC plug from the adaptor onto the DC jack on the back side of the cabinet.
- Plug the DC adaptor to the wall power socket.
- The winder will switch to use wall power automatically once the DC adaptor is being be connected.
- To avoid battery leakage, remove batteries if intended to operate by DC adaptor constantly.
- Use only original manufacturer provided adaptor to avoid risk of system damage.



## Components

### Model: EW-1144

- |                                      |                                      |
|--------------------------------------|--------------------------------------|
| <b>A</b> Cover lens                  | <b>H</b> Manual & Warranty Card      |
| <b>B</b> Pilot                       | <b>I</b> UM-2 batteries x 2 (Option) |
| <b>C</b> Rotor                       | <b>J</b> D.C. power adaptor          |
| <b>D</b> Power switch                | <b>K</b> Direction select switch     |
| <b>E</b> Gents size mounting adaptor | <b>L</b> D.C. jack                   |
| <b>F</b> Universal watch mount       | <b>M</b> Battery compartment         |
| <b>G</b> Watch cleaning cloth        | <b>N</b> Battery compartment cover   |




## To Select The Winding Direction

Please check with your watch manual or consult a watch professional to confirm the most suitable turning direction. Over 85% of fine watches are require alternate winding and generally require a minimum 650~850 Turns Per Day (TPD). Therefore, this winder is pre-set at alternate winding in approximately 1000 TPD to ensure sufficient winding provided. The winder will wind 10 minutes every 2 hours.

You may also check your watches' winding direction from [www.EILUX.com](http://www.EILUX.com) in the chapter of "Technical Info" or "Links to Watch Manufacturers".

- Please refer to product drawings for Direction Select Switch located.
- Set the power switch to the OFF position before adjusting the switch.
- Selection between Alternate ~ Clockwise ~ Counter-clockwise for your watch required.

 **IMPORTANT:** The protective circuit equipped may not accept the direction change if the power switch is not in off position before changing the direction setting.

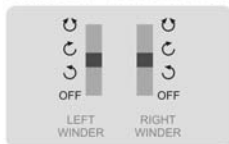
## Auto-Stop Function

- An advanced protective mechanism protects the winder's inner workings by ceasing operation when the watch case is opened.
- When switch to "AUTO-STOP" position, the rotor will stop running whenever the box cover is open. The winder will resume to run again once the cover is closed.
- Whenever the winder is restarted, it will run two 10-minute intervals, and the 10 minutes every 2 hours.



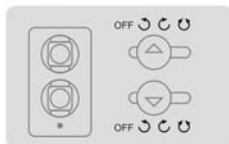
## 1. Winding Direction Select Switches for Double Winders

Model: EW-1444, EW-1488, EW-3444 & EW-3448



- ↺ — Alternate
- ↻ — Clockwise
- ↻ — Counter Clockwise
- OFF — Turn off the winder

Mode: EW-1122



- OFF — Turn off the winder
- ↺ — Counter Clockwise
- ↻ — Clockwise
- ↺ — Alternate

## 2. Winding Direction Select Switches for Triple Winders

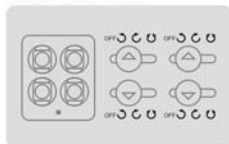
Model: EW-1588, EW-3500



- OFF — Turn off the winder
- ↺ — Alternate
- ↻ — Clockwise
- ↻ — Counter Clockwise

## 3. Winding Direction Select Switches for Quad Winders

Mode: EW-1144



- OFF — Turn off the winder
- ↺ — Alternate
- ↻ — Clockwise
- ↻ — Counter Clockwise

## Battery Operation

- Lift out the accessory tray.
- Insert two (2) UM2 / Size "D" alkaline batteries.
- Put in the accessory tray.



### IMPORTANT:

Please be sure to insert the batteries in the correct direction.

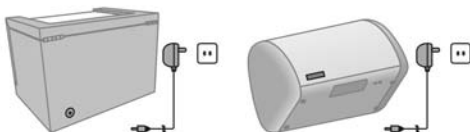
## A / C Power Operation

- Connect the power adaptor to a wall A/C power supply..
- Insert power plug into the jack firmly..
- Power supply from batteries will automatically be cut and convert to A/C power operation when A/C plug has been inserted.
- Use only original manufacturer transformer.  
Improper transformer may damage the winder and cause risk of fire.



### WARNING:

Improper DC adaptor may damage the integrated circuit and cause of fire.



## Important Safeguards

- Use only with appropriate voltage and the adaptor provided with this system to avoid malfunction or damage to the winder.
- Do not remove screws or covers from the power adaptor and the winder unit, there are no user serviceable parts inside.
- Do not expose the system to rain or moisture.
- Disconnect the adaptor from wall outlet to shut the power off completely; the power switch on the winder unit does not disconnect the main line.

## Battery Replacement

1. Replace batteries when the winding compartment is not turning smoothly &/or the pilot light is faded.
2. Switch off the winder before the removal of used batteries.
3. For best performance, alkaline batteries are recommended.
4. After inserting the new batteries, put the battery cover in place and switch the winder back on.
5. Battery life is approximately 1 year in bi-directional mode.
6. Batteries are sold separately.
7. To avoid battery leakage, remove batteries from winder unit when intended idling the winder for extending period time or full time operation by DC adaptor.

## Maintenance

- Keep out of children's reach.
- Do not place the winder under direct sunlight, dusty or extremely hot environments.
- Noise may come from the winder if it is not placed on level surface.
- Use only a soft cloth to clean, do not use solvents or cleaning chemicals.
- Equipped with solid-state fuzzy-logic circuits, no serviceable parts inside.
- For battery operation, even though the pilot light is on, please change batteries when the winding compartment is not turning smoothly &/or stopped.

### SAFETY APPROVED:

Adaptor provided is approved by one or more of the following safety standards.





## **FREQUENTLY ASKED QUESTIONS**

**Q: Why should we use a watch winder?**

**A:** As a precise mechanical instrument, automatic watch movements are designed to be in constant motion. Leaving a mechanical watch unused in drawer for a long period of time will cause lubricants to clot up in complex and critical areas which will hinder watch movements. This dry up process creates accelerated wear on the movement parts when the watch is occasionally worn thereby affecting accuracy and, in some cases, causing damage to the fine mechanic. In order to "exercise" your automatic watch when not being worn, you would require a watch winder. A well-designed watch winder helps maintain proper lubrication and constant running of your fine timepiece. It also minimizes the resetting or adjusting of the watch when left unworn, a convenience especially when it comes to automatic watches with various complications such as perpetual calendars and moon-phases.

**Q: Can automatic watches be damage by the magnetic motor inside a watch winder?**

**A:** No, automatic watches and their movements are not affected by the magnetic fields generated by the watch winder motor. This magnetic field is so small that it has no bearing on the watch and its movement. Furthermore, all modern automatic watches are made of non-magnetic material such as titanium, brass, stainless, etc. Consequently, they are non-magnetic and unaffected by close proximity to magnetic fields.

**Q: Why does my watch not work properly even when being wound by the watch winder?**

**A:** For automatic watches to operate properly when using a watch winder, it is important to always ensure that the watch is fully wound prior to placing the watch on the winder for winding. This is because watch winders are programmed to operate most efficiently, with the most regulated results, when the watch is containing at least 50% of power reserve prior to being placed on a winder. This is similar to watch manufacturers recommending you to manually wind daily-worn mechanical watches before wearing it as this gives the mainspring its maximum torque for highest precision.

**Q: What do the terms "mechanical", "self-winding" and "automatic" mean when they apply to a watch?**

**A:** A "mechanical" watch is a timepiece that derives its power from a tightly coiled main spring housed in a drum or barrel inside the watch case. As this spring unwinds, it releases the energy to power the gear train escapement, balance wheel and other parts of the mechanical movement. The term "self-winding" is really a misnomer. This is because a mechanical watch cannot wind itself; it must be worn, wound by hand or placed on a watch winder in order to operate continuously. An "automatic" watch is a mechanical timepiece that is wound as a result of the wearer's wrist or body movements. Through the slightest motion, a rotor inside the watch case will rotate or oscillate and wind the mainspring.

**Q: Why do EILUX watch winders rely on batteries rather than AC/DC wall outlets to operate?**

**A:** One advantage of the battery-powered watch winder is its portability, safety, and ease of use. This means expensive automatic watches maintained on winders can be easily stored in safes or drawers without the hazards associated with electrical outlets. Furthermore, your expensive and luxury timepieces can be stored wisely in a battery-operated watch winder in a bank safe-deposit box as well. For the best performance of your watch winder, we recommend the use of alkaline batteries. Battery life is generally good for 10 to 12 months. Of course, for convenient usage or desired, a D/C (battery powered) winder can also be operated on A/C by using an AC/DC adapter, which plugs into a wall outlet.

**Q: How long does an automatic watch run when left unworn?**

**A:** Depending on the watch movement, most automatic timepieces have a power reserve of 40 to 60 hours when fully wound. Automatic with complications such as chronographs tend to remain autonomous for slightly shorter periods when these special functions are activated for the duration of its power reserve.



**Q: What is the meaning of "cycle" in the winding modes?**

**A: EILUX** watch winder is equipped with 2-hour cycle winding modes. Let's assume your particular watch needs 600 TPD to keep it fully wound. A low quality watch winder will simply rotate continuously for several hours and turn off for the rest of the day. However, our superior winder operates for 10 minutes per cycle in every 2-hour program, and repeat the same cycle all day long. Both watch winders will keep your automatic watches fully wound but **EILUX** is proven to be better for maintaining watch accuracy. This is due to the mainspring attaining its greatest torque when fully wound. As it slowly unwinds over the day, torque decreases and this torque reduction has a negative effect on the running accuracy of the watch. So, periodical rewinding all day long translates into more constant torque, a constant running rate, and therefore, a more accurate watch.

**Q: How much winding time is right for my watch?**

**A:** When using a watch winder, proper winding time for your automatic can be referred to as Turns per Day or TPD. TPD is the number of turns of the automatic's rotor required daily to keep the watch properly wound. Most automatic watches need between 500 to 850 TPD. For example, Rolex movements require about 650 TPD. Now, Rolex watches and many other brands have movements designed to wind bi-directionally or in either directions. However, some watches wind uni-directionally or in one direction only, either clockwise or counterclockwise. For example, many Patek-Phillipe watches only wind counterclockwise while some IWC chronographs have movements that wind clockwise only. Thus to accommodate the various winding directions of all automatics, the best-engineered watch winders are programmable for dual-rotation directions with separate programs for clockwise or counterclockwise applications.

**Q: Why do EILUX watch winders have only one watch for each rotor?**

**A:** All professional watch winders are made just to keep one watch on each rotor. This is because unbalanced rotors would damage or affect the performance of the motor. Many people who own more than one time-piece usually have various models or styles of watches, which usually have different weights. It is rare for a user to have multiple watches that have exactly the same weight. The motor shaft, rotor bushing and gearing system will be damaged if the motor has to take on different weights, the watch may be greatly damaged as well. Therefore, we do not agree with the idea of having more than one watch on each rotor.

**Q: Can an automatic watch ever be over-wound?**

**A:** No, automatic watches can never be over-wound since automatic movements have a build-in slipping mechanism that prevents over winding. However, this safety device should not be over stressed; simply because such device will eventually set in as with all mechanical instruments. Thus, all high-quality watch winders come equipped with a time control program to regulate the actual winding time cycles of various automatic movements. Here is the discussion that is presented by ROLEX in a booklet that accompanies with their Rolex Oyster watches. "The perpetual rotor is an innovation... patented by Rolex in 1931... a semi-circular rotor... winds the main spring. Once the optimum tension is reached, a special slip clutch prevents over winding... and has been generally adopted throughout the watch making industry."



More information is available on [www.EILUX.com](http://www.EILUX.com)

# WORLD-WIDE GUARANTEE

**Registration**

[www.winder-register.com](http://www.winder-register.com)



x Serial Nr. :

**EX08X B0120**



By registering your winder today, you will be assured of  
**1-Year FREE PARTS AND LABOUR WARRANTY.**  
Serial number is imprinted inside the battery compartment.

<b>Serial Number</b>	
<b>Date of purchase</b>	
<b>Dealer</b>	

**\*\*Guarantee valid subject to terms as listed\*\***

ANOTHER QUALITY PRODUCT BY

**EILUX**  
WATCH WINDING SYSTEM

**EILUX** and **EILUX** are registered trademark of **EILUX INTERNATIONAL INC.**

ALL RIGHTS RESERVED © 2010

 **EILUX**



Printed in Hong Kong  
on recyclable paper.